



# GlenTech®

BRIGHTON • ENGLAND

product guide 2015/16



A full-page background image of a man with a beard and tattoos. The man has a thick, dark beard and mustache, and his hair is styled upwards. He is wearing a white t-shirt and blue jeans. His left arm is heavily tattooed with various designs, including what appears to be a religious figure. He is looking directly at the camera with a serious expression. His hands are in his pockets.

## CONTENTS:

- 02 Intro
- 03 One Scissors
- 04 One Ergo Scissors
- 05 One Neon Scissors
- 07 EVS Scissors
- 08 EVO Scissors
- 09 Pro Scissors
- 11 Two Scissors
- 12 Elite Scissors
- 13 SP Scissors
- 15 Premium Scissors
- 17 Tool Pouches and Belts
- 19 Combs and Brushes
- 21 Razors and Manicure
- 23 Tweezers
- 25 Distributor Displays

# Our Mission: Create Future Classics

TO CELEBRATE 10 YEARS IN THE BUSINESS WE HAVE  
DEVELOPED OUR STRONGEST RANGE EVER



30 new products and 10 great product updates make this an exciting time for Glamtech. The ONE scissor range was the star of 2014 and immediately became one of the UK's best selling scissors, starting thousands of new stylists on their journey. We are now keeping this focus on simple quality and design for the introduction of new models for more experienced professionals. The brand new Glamtech Pro range offers unbeatable style and performance for the next step in career development. EVS and EVO have undergone a huge overhaul. The SP range has been replaced with 4 models for advanced stylists. Ultra represents an exciting new direction using patented ceramic technology to deliver a cut like no other while maintaining the core strength of the scissor. We are also introducing our 30% carbon fibre combs, razors, manicure range and making our first venture into the brush market. Fantastic and unique new displays guarantee an impact in store and excellent high quality point of sale material is now available. We have made huge steps - please take a look.



Andrew Wiseman (Managing Director)

# Our Mission: Trust / Reliability / Performance

# ONE

ONE OF THE UK'S BEST SELLING SCISSORS



#### Sizes available:

- 5.0"
- 5.5"
- 6.0"
- 5.0" serrated
- 5.5" serrated
- 6.0" serrated
- 6.5"
- 7.0"
- 5.0" lefty
- 5.5" thinner
- 5.0" scissor + 5.5" thinner set
- 5.5" scissor + 5.5" thinner set
- 6.0" scissor + 5.5" thinner set
- 5.0" lefty scissor + 5.5" lefty thinner set

One is the ultimate scissor to start your career as well as offering the perfect backup for experienced stylists. Razor edged blades are perfect for slice cutting and serrated option provides the grip popular with barbers and some students. Designed to be sturdy, durable and dependable while delivering the perfect accurate no slip cut.



Our Mission:  
Trustworthy Ergonomic Performance

# 1ENO ERGO

THE NATURAL DEVELOPMENT OF A CLASSIC

We have taken the solid characteristics and reliability of one of the UK's best selling ranges and crafted a design that guarantees the ultimate comfort and perfect cutting position.



# NEON



When you are on to a winner you can't help showing off a bit! For the finishing touch on one of the UK's most popular scissors we had to add four fantastic colours. An improved-durability metallic look finish has been added to ensure they keep their style.



**GlenTech**  
BRIGHTON ENGLAND



## Our Mission: Grab A Bit Of Attention



NEON Pink



NEON Green



NEON Red



NEON Purple

Sizes available:  
5.5"

# Our Mission: Smooth Operator



After nine years of EVS scissors we have given them a new lease of life. While maintaining the classic shape we have improved the Japanese steel alloy and introduced huge engineering improvements to provide an enhanced super-smooth feel. Improved tension system, cutting edge and hand finishing ensure a higher quality effortless feel and new crisper cut.

Sizes available:  
5.0"  
5.5"  
5.5" thinner

japanese  
steel

# Our Mission: Smooth Operator



We have maintained the classy offset shape of one of our best sellers - but that is where it ends. Developments in manufacturing techniques have created a difference you feel immediately. A smooth effortless cut reduces strain, increases comfort, delivers a crisp, satisfying performance and perfect ergonomic cutting position.

# Our Mission: Excellence In Simplicity

pro



We looked to the Japanese traditions of no fuss and clean lines.

No gimmicks and pure style make Pro

appeal. A super comfortable

combines with the beautiful

the Pro's sublime hand-

to deliver awesome

satisfying performance.

our model with the widest

clean aesthetic

cut delivered by

crafted razor edges



**Glemtech**  
BRIGHTON • ENGLAND

**NEW  
MODEL**

PRO Steel

PRO Steel Thinner

PRO Red

PRO Red Thinner

japanese  
steel

Sizes available:  
5.0" steel  
5.5" steel / red  
5.75" steel thinner / red thinner  
6.0" steel  
5.5" steel lefty

## Our Mission: Style And Elegance

TWO



Inspired by early 20th century French design, TWO offers a sturdy, durable feel while displaying subtle details that evoke the essence of a time when demure sophistication ruled. Not to be used while wearing a track suit! Our white Teflon coating ensures an easy-clean, durable surface that always stays white.

Sizes available:  
5.25" steel  
5.75" steel  
5.75" white

japanese  
steel

## Our Mission: Light And Lasting



These three slim models are for stylists who favour lightly weighted scissors. All three provide good power through the screw for excellent cuts and the range represents a jump in steel hardness for supreme durability. The plasma coating on Onyx and Dusk and the laser etched designs on Grace and Dusk are permanent because none of these fine shears will require replacing for years to come.

## Our Mission: Classic Quality

**SP**  
**range**

YEARS OF EXPERIENCE GO INTO HAND CRAFTING THESE SERIOUS PROFESSIONAL SCISSORS FOR SERIOUS PROFESSIONAL STYLISTS

high grade  
japanese steel  
for durability

### SP classic

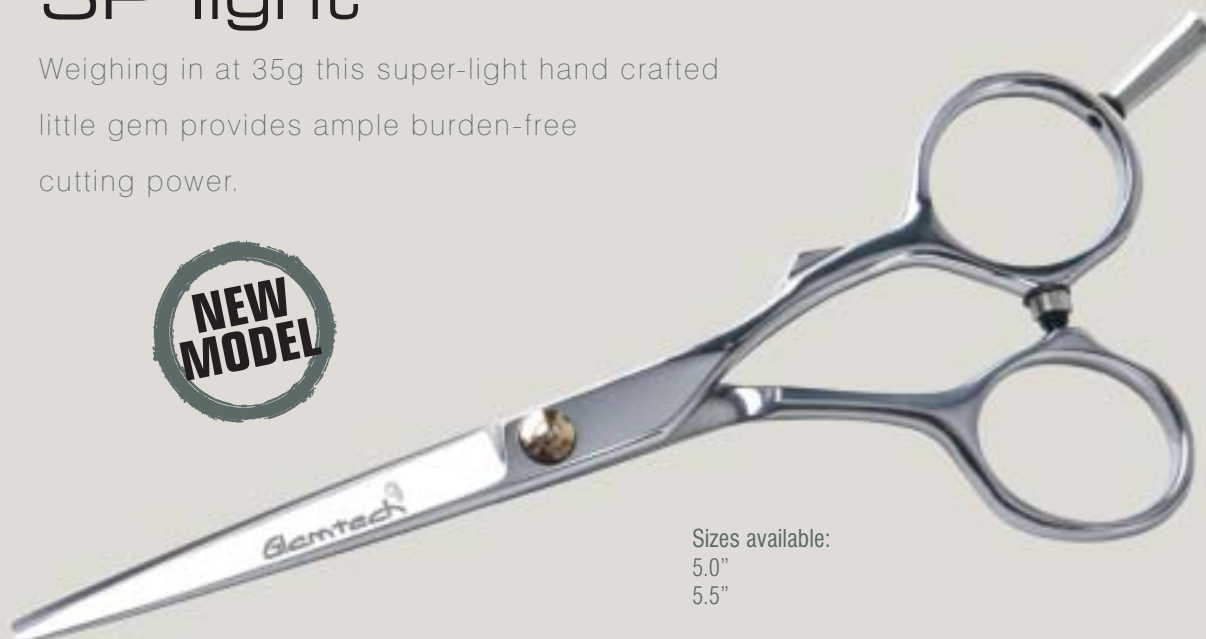
A medium-weighted, classically styled offset scissor designed with pleasing clean lines.



Sizes available:  
5.0"  
5.5"  
6.0"  
5.5" lefty

### SP light

Weighing in at 35g this super-light hand crafted little gem provides ample burden-free cutting power.



Sizes available:  
5.0"  
5.5"

## SP thinner

This robust 30 tooth thinner with smooth rounded feel provides simple, elegant and reassuringly solid performance.



Sizes available:  
5.75"

## SP sword

A development of our old favourite with powerful mountain back blade and even smoother performance.



Sizes available:  
6.0"  
6.5"

Our Mission:  
Nothing Feels Better

ultimate  
japanese steel

**TATSU**

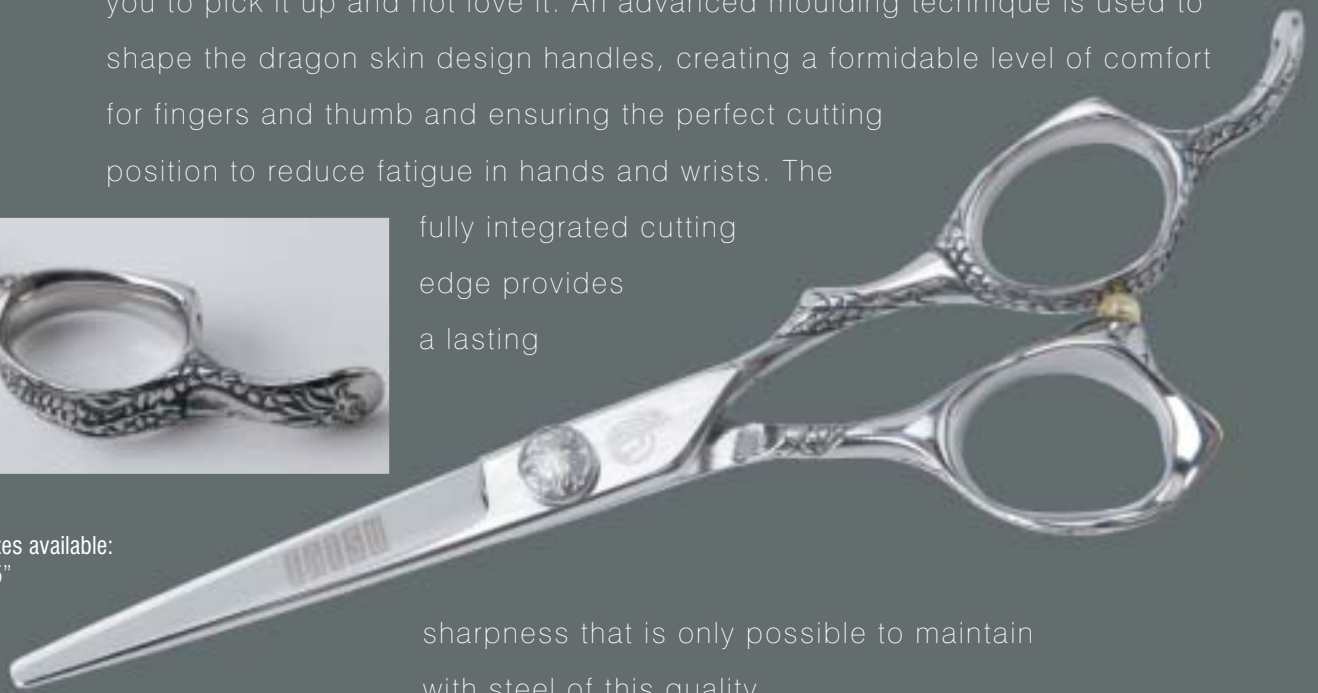
Every Tatsu is handmade in superior materials and undergoes a rigorous testing process to guarantee

perfection. The silky smooth cutting action is a treat to experience. We challenge you to pick it up and not love it. An advanced moulding technique is used to shape the dragon skin design handles, creating a formidable level of comfort for fingers and thumb and ensuring the perfect cutting position to reduce fatigue in hands and wrists. The

fully integrated cutting  
edge provides  
a lasting



Sizes available:  
5.5"



sharpness that is only possible to maintain  
with steel of this quality.

**GlenTech**  
BRIGHTON • ENGLAND

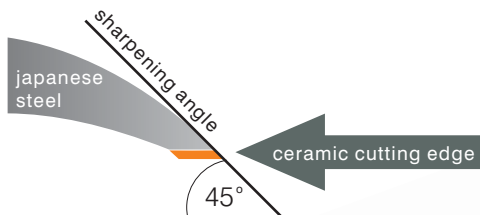
# Our Mission: Ceramic Revolution

## ULTRA

### UNRIVALED CUTTING POWER



cross section of blade



Sizes available:  
5.75"

You need to feel it to believe it. Ceramic provides a sharper and more precise cut than steel with a more controlled feel. Ceramic maintains its edge longer increasing time between services but until now manufacturers have been unable to make the most of its power. Glamtech have used patented technology to attach a ceramic edge to a solid steel blade to achieve the perfect cut while the ceramic material remains protected and able to do its work. The result is a cut that feels different... in a very good way! A perfect straight cut through to the very tip and a control on the hair that you have never experienced before. Just feel it!

\* Please note:  
Ceramic is not resistant to ultraviolet rays used for sterilization.

## Our Mission: Practical Style



With room for up to six scissors, a selection of combs and clips our diamond belt is practical and handy of course - but that is easily forgotten in the wake of the unapologetic bling. Hand stitched in durable, easy clean leatherette and with a super durable fixed belt, this pouch will house and protect your tools safely. Flap removes with steel poppers for fast access.

Measurements: Fits any size waist up to 102cm (40")  
Pouch height: 20cm  
Pouch width: 16cm



Measurements:  
Fits any size waist  
from 61cm (24")  
to 102cm (40")

Inspired by the best handyman in the business we designed our longstanding and best selling tool belt to combine practicality and style. With room for all scissors, clips, combs as well as a secure zip wallet for your cash - everything is catered for. Hand stitched in hard wearing, easy clean leatherette the belt will serve you faithfully and elegantly.

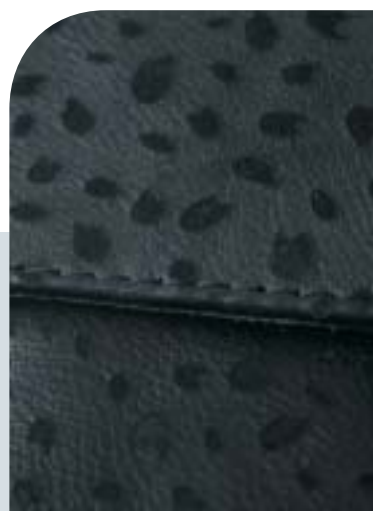
# Our Mission: Feed The Envy!



We combined a popular pouch with our national love of designer handbags to create two hand-made works of envy. It is hard to beat the smell and feel of beautiful soft leather and investing in one of these is something you will never regret. With traditional plain leather or sumptuous black on black leopard options available - you decide. Flap removes with steel poppers for fast access.



Measurements: Fits any size waist up to 102cm (40")  
Pouch height: 20cm  
Pouch width: 16cm



## Our Mission: Live Long And Prosper

Glamtech combs contain 30% carbon fibre ensuring they are strong and durable. The compound is tough while allowing sufficient flex. Micro rounded tooth tips eliminate pulling or hair breakage and provide an excellent glide. The range is heat and chemical resistant and of course anti-static. Gentle on both hair and scalp for professional use.



**01** 178mm Barber Taper Comb

**02** 180mm Shallow Cutting Comb

**03** 180mm Deep Cutting Comb



**04** 210mm Thumb Grip Clipper Comb



**05** 215mm Large Cutting Comb With Sectioning Tooth



**06** Pin Tail Sectioning Comb  
230mm including tail



Union Paddle Brush





Our new comprehensive range of razors offer excellent quality and style for salon and barber. If you are looking to make a statement and spoil yourself with the ultimate tool - we have just the thing.

Our premium manicure set is available with display tray for retail sales.

# Our Mission: New Areas Of Style

## Folding Cut Throat Razor

Excellent high carbon steel  
for a lasting edge.  
Suitable for  
shaving  
and hair  
cutting.



## Feather Razor

Solid steel handle.  
Supplied with a 10 pack of blades.  
Replacement blade packs available.



## Damascus Steel Cut Throat Razor

Using the techniques of ancient  
Middle Eastern sword makers  
Damascus steel is tough, resistant  
to shattering and capable of being  
honed to a sharp, resilient edge.

**INCLUDES:** Tweezer  
Nail Clipper  
Folding Nail File  
Nail Nipper  
Nail Scissors  
Cuticle Pusher



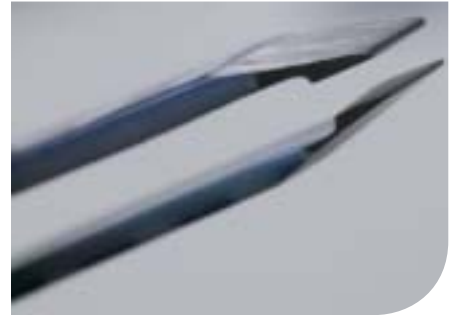
## Premium Unisex Manicure Set



**Glamtech**  
Glamtech Limited

# Tweezers

Our range of surgical steel, hand honed tweezers has undergone a huge makeover. Precision tipped perfection remains top of the list but why not express some individuality at the same time?



**RANGE  
INCLUDES  
15 ALL NEW  
TWEEZERS**



brow comb



heart red glitter



heart black



neon yellow



neon pink



neon red



green



purple



pink



orange



plain straight



twintweeze



plain pointed



plain slant



triple pack





# Displays And Poster Pack



**In Store Scissor Display**

Fittings supplied for wall mounting, slat wall or counter standing



**Field Sales Scissor Board**

Holds up to 20 scissors



**In Store Comb Display**

Fittings supplied for wall mounting, slat wall or counter standing

**In Store Tweezer Display**

Fittings supplied for wall mounting slat wall or counter standing

**Poster Pack**



B R I G H T O N   .   E N G L A N D



**Glamtech** 

Unit 11  
Thesiger Close  
BN11 2RN

Tel: +44 (0)1903 209 409  
[www.glamtech.co.uk](http://www.glamtech.co.uk)

